



## joe e. berry jr. residence hall (women)



Berry Residence Hall is a six-story building that houses approximately 630 women in four-, six-, and seven-person suites. Suites are comprised of two or three bedrooms, one or two bathrooms, a living room, and kitchenette, and they open to inside corridors. The common area in each suite is furnished with a cherry-finish café table and barstools, one lounge chair, one sofa (three-bedroom suites) or loveseat (two-bedroom suites), one end table and a TV cube. The kitchenette comes with a small built-in microwave and compact refrigerator (3.6 cu. ft.), which are shared by four to six people. Only one supplemental refrigerator per bedroom is allowed (not to exceed 4.0 cu. ft. interior capacity and with a three-prong/120 volt plug). No additional microwaves are permitted.



Two to four people share a bathroom – compartmentalized into separate rooms for the toilet, tub/shower (60" wide with white vinyl curtain) and vanity with two sinks (6' wide with two cabinets and four drawers for storage). For additional storage, residents may bring over-the-toilet cabinets that are supported by poles; wall attachments are not allowed.



The color scheme is: bright white walls and ceilings, charcoal grey door trim and baseboards, natural oak doors, and full-spectrum “daylight quality” lighting (bedroom lighting is limited to the closet area). Desk, floor or table lamps will help brighten the area, but no halogen lamps are allowed. Upholsteries are multicolored and fit with most color schemes. Floors are covered with white vinyl tile. Students may bring their own area rugs (a standard 3'x5' rug easily fits in the aisle between the beds; a 5'x8' rug fits when the edges are under the bed).



On the first floor: an activity room, offices and a central lounge. Each upper level (floors two through six) is organized into north and south residential villages that are connected by a central town center where there is a group kitchen (with sink, microwave, cook top, oven and refrigerator), TV lounge, laundry facility and study room (except on the third floor where there is a computer lab instead). The Hungry Cougar, a campus restaurant, is located on the first floor of Berry in the breezeway. In addition, this building contains a multi-zone fire alarm system, fire sprinkler system, digital security camera system and 24-hour information/security desk.



Rose Christ '09  
New Paltz, N.Y.

Double major: political science and communication

“I’m a transfer student. I started out not knowing anyone, and living in Berry has given me the opportunity to meet a lot of new friends.

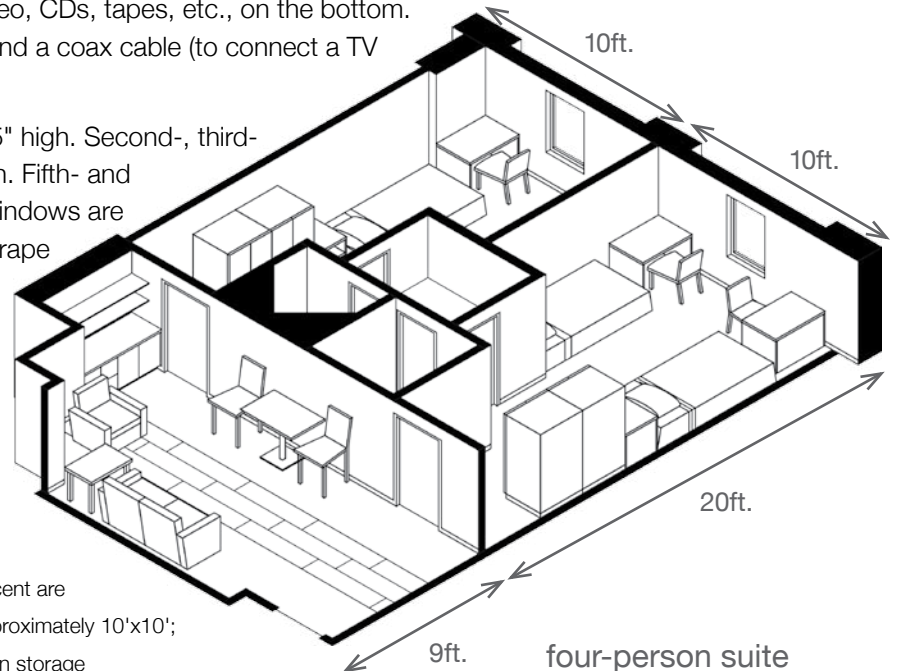
“My favorite thing about living here is that every floor has a full kitchen. My friends and I cook here at least once a week, and it’s a nice way to meet people and have bonding experiences.

“The location is great, too. All my classes are less than 10 minutes away, and if I need to get to the library, that’s right down the street.”



## joe e. berry jr. bedrooms

- Two metal-frame single beds (80" long x 36" wide), not loftable/bunkable – twin-long sheets
- Two cherry-finish desks (36" wide x 27" deep x 30" high) with retractable keyboard and mouse surface with rear storage. Knee space is wide enough to allow for vertical computer towers. Bring your own lightweight/stackable shelving to put above the desk. Four electrical outlets (the only ones in the room) and telephone and wired Internet outlets are above each desk. Extension cords must be approved by residence life and have three-prong connections.
- Two cherry-wood desk chairs with purple-colored upholstered seats
- Two cherry-finish wardrobes (36" wide x 24" deep x 72" high) with two drawers (36" wide x 24" deep) at the bottom. Wardrobes are fitted with a hasp for a padlock.
- One shared cherry-finish entertainment cube (24" wide x 24" deep x 30" high). There is space for a television on top, a DVD and VCR on a middle fixed shelf, and a small stereo, CDs, tapes, etc., on the bottom. A three-pronged extension with surge protector and a coax cable (to connect a TV with the cable TV outlet) are required.
- Windows: First-floor windows are 66.5" wide x 65" high. Second-, third- and fourth-floor windows are 26.5" wide x 65" high. Fifth- and sixth-floor windows are 26.5" wide x 54" high. All windows are covered with 2" plantation blinds (students may drape fabric from the valance but may not use wall- or frame-fastened curtain rods).
- Air conditioning
- Telephone hook-up (per bedroom)
- Basic cable television service (per bedroom)
- "Wired" Internet service



four-person suite  
bedrooms are  
20ft. long by 10ft. wide

Room dimensions vary according to specific locations, but 90 percent are L-shaped, with the area containing beds and desks measuring approximately 10'x10'; the dimensions where the wardrobes, entertainment cube and open storage area are located are 5'x10'. Some rooms are slightly larger.

