



## college lodge residence hall (coed)



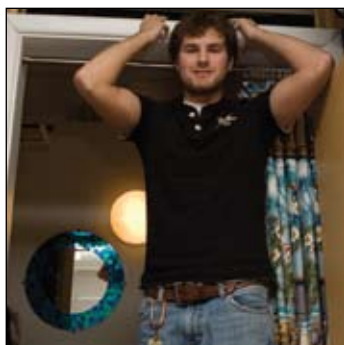
College Lodge is a six-story co-ed residence hall for approximately 200 students who live two to a room. There is an outside courtyard equipped with a basketball court and cook-out area, which is used for hall socials and activities.

The color scheme for bedrooms and bathrooms: bright white ceilings and white walls. Floor tiles are colorfully patterned in white, turquoise and orange. Students may bring their own area rugs (a 3'x5" or 5'x8" rug easily fits).

Two people share a bathroom – compartmentalized, with a vanity area containing one sink (no drawer space, but limited cabinet space for toiletry items), a towel bar, and an area for a toilet and tub/shower combination (60" wide with white vinyl curtain).



On the first floor there is a study room, computer lab and laundry room/vending area, and a game room with billiard table, foosball table and a large-screen TV. In addition, the building contains a multi-zone fire alarm system, digital security camera system and 24-hour information/security desk.



Derek Schill '11  
Pittsburgh, Pa.  
Major: business administration

"College Lodge has the best location on campus, since everything is equally close by, and King Street is right around the corner. Also, College Lodge has a friendly and approachable staff that listens to your concerns. Everyone in this dorm knows each other because the game room is a great hangout and the RAs create fun programs."



## college lodge bedrooms

- Two wood-frame maple-finish single beds (80" long x 36" wide), semi-lofted\* and bunkable – twin-long sheets  
\* gives approximately 30" of vertical clearance under the bed
- Two maple-finish desks with turquoise op-art desktops (36" wide x 18" deep x 30" high). Each desk has a retractable keyboard and mouse surface with rear storage. Knee space is wide enough to allow for vertical computer towers. Bring your own lightweight/stackable shelving to put above the desk.
- Two black steel-frame desk chairs with grey plastic seats
- Two three-drawer maple-finish chests of drawers (36" wide x 18" deep x 30" high)
- Two maple-finish wardrobe cabinets (30" wide x 24" deep x 72" high), each with one shelf and a bar for hanging clothes. Wardrobes are fitted with a hasp for a padlock.
- One microwave and one mini-refrigerator. (Students are not allowed to bring extra microwaves and or mini-refrigerators.)
- Two padded side chairs (silver aluminum frame with purple vinyl upholstery)
- Two large windows (50" wide x 92" high on the second floor; 50" wide x 78" high on all other floors) covered by 2" white blinds (students may drape fabric from the valance but may not use wall- or frame-fastened curtain rods).
- Air conditioning
- Telephone hook-up (per bedroom)
- Basic cable television service (per bedroom)
- "Wireless" Internet service

