



## glenn mcconnell residence hall (coed)



Glenn McConnell Hall is a four-story building housing 240 men and women in suites (shared by four to eight residents) that open to inside corridors. The hallways overlook a central open courtyard. Each suite consists of two to four bedrooms, one or two bathrooms and one living room with kitchenette.

The common area in each suite is furnished with a cherry wood-finish dining table and chairs, one lounge chair, one sofa, one end table and one TV cube. Upholstery is multicolored. The kitchenette comes with cabinets, a sink, microwave, full-size refrigerator and a pantry (with individual cabinets for each resident). No additional refrigerators or microwaves are allowed.

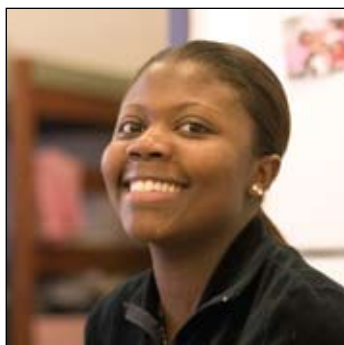


Suites have one or two bathrooms shared by two to four students – compartmentalized with a vanity area containing two sinks and a second area for toilet and shower (60" wide with white vinyl curtain). The vanity has plenty of counter space but no drawer or cabinet space. For additional storage, residents may bring over-the-toilet cabinets that are supported by poles; wall attachments are not allowed.

Color scheme for the common area is bright white walls and ceilings, navy blue or aqua (depending on the floor) door trim and baseboards, tan doors and full-spectrum daylight quality lighting. Floor coverings are: white and cocoa checkerboard tile with aqua and blue accents in the common areas, and white and cocoa checkerboard tile in the bedroom. Students may bring their own area rugs (a 3'x5" or 5'x8" rug easily fits).



The community spaces include an activity room with connecting courtyard, home theater, computer lab, group kitchen and a study lounge. Laundry rooms are located on the second and fourth floors. There is a group kitchen with a sink, microwave, cook top, oven and refrigerator. In addition, the building contains a multi-zone fire alarm system, fire sprinkler system, digital security camera system and 24-hour information/security desk.



Celena Hilliard '08  
Columbia, S.C.  
Major: biology

"I have found that the people in McConnell are very close and very friendly. The courtyard is the major hangout place. Also, the spacious common areas are a great place to socialize with your roommates.

"I really like the kitchenette with the full-size refrigerator. I also like that the bathroom is separate from the bedrooms, so you have a sense of space and privacy."



## glenn mcconnell bedrooms

- Two cherry-finish wood-frame single beds (80" long x 36" wide), lofted\* and bunkable – twin-long sheets  
\* gives approximately 66" of vertical clearance at full loft position and 30" of vertical clearance at semi-loft position
- Two cherry-finish desks (72" wide x 24" deep x 30" high) designed with three modular components. All sections align to form a continuous desktop surface or they can be customized. The first section has a retractable keyboard and mouse surface with rear storage. The second has a reference shelf, drawer and one cabinet fitted with a hasp for a padlock. The third contains two open shelves.
- Two cherry wood-frame desk chairs with an aqua upholstered seat
- Two cherry-finish wardrobe cabinets (36" wide x 24" deep x 72" high) with two drawers (36" wide x 24" deep). Wardrobes are fitted with a hasp for a padlock.
- One cherry-finish TV cube (24" wide x 24" deep x 30" high) with space on top for a TV, a fixed middle shelf that will hold a VCR and DVD player, and space below for a small stereo, CDs, tapes, etc. A three-pronged extension cord with surge protector and a coax cable (to connect a TV with the cable TV outlet) are required.
- One window: 33" wide x 66" high covered by 2" plantation blinds (students may drape fabric from the valance but may not use wall- or frame-fastened curtain rods).
- Air conditioning
- Telephone hook-up (per bedroom)
- Basic cable television service (per bedroom)
- "Wired" Internet service (per student)

Although dimensions vary according to the specific location, typical "long" bedrooms measure 9' wide x 20'0" long. "Square" bedrooms are generally 10'0" wide x 11'6" long.

